

 **FILTER-STREAM**

 **FILTER-STREAM**

Best price • Best lead times • Certified

 **FILTER-STREAM**

For more information visit us at [www.filter-stream.com.au](http://www.filter-stream.com.au)







## Who are we?

We are an Australian owned manufacturer based in Smeaton Grange, New South Wales. We have over 15 years' experience in extraction canopy manufacture and 25 years' experience in stainless steel fabrication.

## What do we produce?

Our sheet metal workshop is fitted out with modern CNC machinery and tooling and we specialise in the fabrication of the highest quality stainless steel extraction canopies for commercial kitchen applications.

We were exclusively manufacturing a well-known extraction canopy brand since its inception to the Australian market in 2011.



## Why choose us?

- ✓ All Filter-Stream canopies are designed and manufactured in Australia, supporting local employment and apprenticeships.
- ✓ All Filter-Stream canopies comply with Australian Standard 1668.2-2012.
- ✓ We provide a high-quality product with excellent service.
- ✓ You will be dealing directly with us, the manufacturer, so we ensure you get the best pricing and lead times in the market.
- ✓ We take great care and consideration throughout the whole process, including packaging your canopy to prevent damage in transit. This ensures the canopy will arrive safely to your destination.



## Custom solutions

We offer a complete range of standard filter, high-velocity, low volume extraction canopies, including make-up air. All our Filter-Stream extraction canopies are custom made to suit your requirements.

We assist with all your extraction needs from mechanical air data requirements, canopy selection and design through to fabrication and delivery. Each extraction canopy is designed and fabricated in house.



## Filter-Stream Models

	CE	SU	ISE	DE	DES	FSCON
						
Features & Benefits	Extract Only	Extract & Supply	Extract & Induction Supply	Dual Extract Only (Front & Rear)	Dual Extract (Front & Rear) & Supply	Condensate
304 grade stainless steel construction	✓	✓	✓	✓	✓	✓
Up to 50% air flow reduction rates compared with traditional canopies. This equates to reduced plant sizes, i.e., more economical to install and run	✓	✓	✓	✓	✓	
Slide dampers on spigots for customisable air flow requirements	✓	✓	✓	✓	✓	
LED downlights (600 luminaire output)	✓	✓	✓	✓	✓	
NATA certified, highly efficient baffle filters that reduces fire risk and cleaning frequency	✓	✓	✓	✓	✓	
Supply air must be introduced by others	✓			✓		
Available in low profile front for low ceiling heights	✓ Model CEL	✓ Model SUL	✓ Model ISEL			
Aircurtain that directs plume back toward the extraction filters and prevent spill into the cooking environment. Spot coolers to provide the chef comfort and reintroduce cool, clean air into the environment		✓	✓		✓	
Induction fan to introduce minimal air. Supply air must be introduced by others			✓			
Suited to high output cooking lines – Asian style, chargrilling etc				✓	✓	
Suited to dishwashing areas						✓
Removes condensation from the space						✓



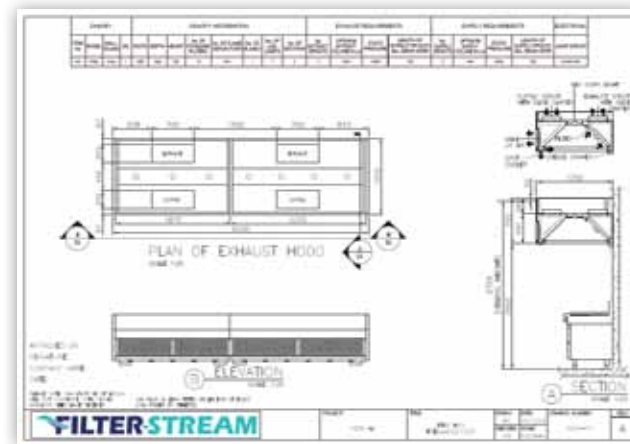
## Price point

When you purchase a Filter-Stream extraction canopy from us you are dealing direct with the manufacturer, avoiding the mark up and commission you would pay ordering through a reseller. We guarantee our prices are the best in the market and if you find a comparable product at a lower price, we will beat that price.

## Sales service

All our Filter-Stream extraction canopies are custom made to suit your requirements. We provide you with air data requirements and design drawings as part of our comprehensive process.

FILTER-STREAM									
NO.	DESCRIPTION	QTY	UNIT	REMARKS	NO.	DESCRIPTION	QTY	UNIT	REMARKS
1	EXHAUST HOOD	1	NO.	1200 x 600 x 100	2	EXHAUST HOOD	1	NO.	1200 x 600 x 100
3	EXHAUST HOOD	1	NO.	1200 x 600 x 100	4	EXHAUST HOOD	1	NO.	1200 x 600 x 100
5	EXHAUST HOOD	1	NO.	1200 x 600 x 100	6	EXHAUST HOOD	1	NO.	1200 x 600 x 100
7	EXHAUST HOOD	1	NO.	1200 x 600 x 100	8	EXHAUST HOOD	1	NO.	1200 x 600 x 100
9	EXHAUST HOOD	1	NO.	1200 x 600 x 100	10	EXHAUST HOOD	1	NO.	1200 x 600 x 100
11	EXHAUST HOOD	1	NO.	1200 x 600 x 100	12	EXHAUST HOOD	1	NO.	1200 x 600 x 100
13	EXHAUST HOOD	1	NO.	1200 x 600 x 100	14	EXHAUST HOOD	1	NO.	1200 x 600 x 100
15	EXHAUST HOOD	1	NO.	1200 x 600 x 100	16	EXHAUST HOOD	1	NO.	1200 x 600 x 100
17	EXHAUST HOOD	1	NO.	1200 x 600 x 100	18	EXHAUST HOOD	1	NO.	1200 x 600 x 100
19	EXHAUST HOOD	1	NO.	1200 x 600 x 100	20	EXHAUST HOOD	1	NO.	1200 x 600 x 100
21	EXHAUST HOOD	1	NO.	1200 x 600 x 100	22	EXHAUST HOOD	1	NO.	1200 x 600 x 100
23	EXHAUST HOOD	1	NO.	1200 x 600 x 100	24	EXHAUST HOOD	1	NO.	1200 x 600 x 100
25	EXHAUST HOOD	1	NO.	1200 x 600 x 100	26	EXHAUST HOOD	1	NO.	1200 x 600 x 100
27	EXHAUST HOOD	1	NO.	1200 x 600 x 100	28	EXHAUST HOOD	1	NO.	1200 x 600 x 100
29	EXHAUST HOOD	1	NO.	1200 x 600 x 100	30	EXHAUST HOOD	1	NO.	1200 x 600 x 100
31	EXHAUST HOOD	1	NO.	1200 x 600 x 100	32	EXHAUST HOOD	1	NO.	1200 x 600 x 100
33	EXHAUST HOOD	1	NO.	1200 x 600 x 100	34	EXHAUST HOOD	1	NO.	1200 x 600 x 100
35	EXHAUST HOOD	1	NO.	1200 x 600 x 100	36	EXHAUST HOOD	1	NO.	1200 x 600 x 100
37	EXHAUST HOOD	1	NO.	1200 x 600 x 100	38	EXHAUST HOOD	1	NO.	1200 x 600 x 100
39	EXHAUST HOOD	1	NO.	1200 x 600 x 100	40	EXHAUST HOOD	1	NO.	1200 x 600 x 100
41	EXHAUST HOOD	1	NO.	1200 x 600 x 100	42	EXHAUST HOOD	1	NO.	1200 x 600 x 100
43	EXHAUST HOOD	1	NO.	1200 x 600 x 100	44	EXHAUST HOOD	1	NO.	1200 x 600 x 100
45	EXHAUST HOOD	1	NO.	1200 x 600 x 100	46	EXHAUST HOOD	1	NO.	1200 x 600 x 100
47	EXHAUST HOOD	1	NO.	1200 x 600 x 100	48	EXHAUST HOOD	1	NO.	1200 x 600 x 100
49	EXHAUST HOOD	1	NO.	1200 x 600 x 100	50	EXHAUST HOOD	1	NO.	1200 x 600 x 100
51	EXHAUST HOOD	1	NO.	1200 x 600 x 100	52	EXHAUST HOOD	1	NO.	1200 x 600 x 100
53	EXHAUST HOOD	1	NO.	1200 x 600 x 100	54	EXHAUST HOOD	1	NO.	1200 x 600 x 100
55	EXHAUST HOOD	1	NO.	1200 x 600 x 100	56	EXHAUST HOOD	1	NO.	1200 x 600 x 100
57	EXHAUST HOOD	1	NO.	1200 x 600 x 100	58	EXHAUST HOOD	1	NO.	1200 x 600 x 100
59	EXHAUST HOOD	1	NO.	1200 x 600 x 100	60	EXHAUST HOOD	1	NO.	1200 x 600 x 100
61	EXHAUST HOOD	1	NO.	1200 x 600 x 100	62	EXHAUST HOOD	1	NO.	1200 x 600 x 100
63	EXHAUST HOOD	1	NO.	1200 x 600 x 100	64	EXHAUST HOOD	1	NO.	1200 x 600 x 100
65	EXHAUST HOOD	1	NO.	1200 x 600 x 100	66	EXHAUST HOOD	1	NO.	1200 x 600 x 100
67	EXHAUST HOOD	1	NO.	1200 x 600 x 100	68	EXHAUST HOOD	1	NO.	1200 x 600 x 100
69	EXHAUST HOOD	1	NO.	1200 x 600 x 100	70	EXHAUST HOOD	1	NO.	1200 x 600 x 100
71	EXHAUST HOOD	1	NO.	1200 x 600 x 100	72	EXHAUST HOOD	1	NO.	1200 x 600 x 100
73	EXHAUST HOOD	1	NO.	1200 x 600 x 100	74	EXHAUST HOOD	1	NO.	1200 x 600 x 100
75	EXHAUST HOOD	1	NO.	1200 x 600 x 100	76	EXHAUST HOOD	1	NO.	1200 x 600 x 100
77	EXHAUST HOOD	1	NO.	1200 x 600 x 100	78	EXHAUST HOOD	1	NO.	1200 x 600 x 100
79	EXHAUST HOOD	1	NO.	1200 x 600 x 100	80	EXHAUST HOOD	1	NO.	1200 x 600 x 100
81	EXHAUST HOOD	1	NO.	1200 x 600 x 100	82	EXHAUST HOOD	1	NO.	1200 x 600 x 100
83	EXHAUST HOOD	1	NO.	1200 x 600 x 100	84	EXHAUST HOOD	1	NO.	1200 x 600 x 100
85	EXHAUST HOOD	1	NO.	1200 x 600 x 100	86	EXHAUST HOOD	1	NO.	1200 x 600 x 100
87	EXHAUST HOOD	1	NO.	1200 x 600 x 100	88	EXHAUST HOOD	1	NO.	1200 x 600 x 100
89	EXHAUST HOOD	1	NO.	1200 x 600 x 100	90	EXHAUST HOOD	1	NO.	1200 x 600 x 100
91	EXHAUST HOOD	1	NO.	1200 x 600 x 100	92	EXHAUST HOOD	1	NO.	1200 x 600 x 100
93	EXHAUST HOOD	1	NO.	1200 x 600 x 100	94	EXHAUST HOOD	1	NO.	1200 x 600 x 100
95	EXHAUST HOOD	1	NO.	1200 x 600 x 100	96	EXHAUST HOOD	1	NO.	1200 x 600 x 100
97	EXHAUST HOOD	1	NO.	1200 x 600 x 100	98	EXHAUST HOOD	1	NO.	1200 x 600 x 100
99	EXHAUST HOOD	1	NO.	1200 x 600 x 100	100	EXHAUST HOOD	1	NO.	1200 x 600 x 100







## Lead times

Our lead times are the best in the market for low velocity commercial extraction canopies at 15 working days from signed design drawings. By ordering with us you buy direct from the manufacturer with one point of contact, streamlining all processes.

## Warranties

We offer a 12 month warranty on all Filter-Stream extraction canopies (excluding LED downlights).

## Certification

All Filter-Stream canopies comply with Australian Standard 1668.2-2012. Certificates of Conformance by WEBB Australia Group are provided with every canopy sold.

Codemark approval pending.



31 January 2023

To the Building Ventilation Certifier

**RE: CERTIFICATION OF KITCHEN VENTILATION FILTER-STREAM CANOPY RANGE**

**PRODUCT REFERENCE: EXTRACTION CANOPIES**

The Kitchen Ventilation Filter-Stream extract canopy range are proprietary products of HRC Alliance Pty Ltd that comply with the performance requirements of the Building Code of Australia as an Alternative Solution (NCC 2019 Part A1) when operated and maintained in accordance with the Manual.

All HRC Alliance hoods are manufactured to comply with or exceed the requirements of DW172, BS6173 and meet the criteria of VDI 2052:2017. The exhaust hoods have specific requirements to allow them to perform to their design and comply directly to Australian Building Code Part 3.8.5.0 (a) as they are an engineered solution.

Commercial cooking line ups commonly produce fats, odours and greases that precipitate on surfaces and create health and safety concerns. The Kitchen Ventilation range improves the operating environment in these cooking areas, exceeding the AS1668.2-2012 requirements.

All canopies (except the HRC Alliance Condensate model) come with Filterstream Baffle Filters for optimum performance. Laboratory tests confirm that Filterstream baffle filters are superior in particulate capture, even down to 3.5 microns in size, providing better filtration and cleaner, safer ductwork. The grease filters tested to VDI 2052-1: Up to 100% efficient at 5.6 microns and 70% efficient at 3.5 microns.

The Kitchen Ventilation range operates with the goal of AS 1668.2-2012, Section 3.1 that "indoor air contaminants are diluted or removed entirely" by capturing and filtering air of the cooking plume before exhausting it as recirculated make up air.

Within Section 3, clauses 3.4, 3.5 and 3.6 and specifically under 3.4.1 paragraph 2, the Standard states: "Alternative exhaust hood designs including proprietary designs and specialized (application specific) designs may be used provided that it can be established that the performance of such hoods is at least equivalent to the hoods described in this Section."

Under this clause, we can confirm that HRC Alliance's Filter-Stream hood products meet the Standard on the basis that it can be clearly established by the function of existing installations, that the performance of the canopies is at least equivalent to the hoods described in that section of the Standard.

If you require further detail on the performance of the Kitchen Ventilation Range, please contact me anytime.

Yours sincerely  
Webb Australia Group (NSW) Pty Ltd

A handwritten signature in black ink, appearing to read 'Paul Moro', written in a cursive style.

Paul Moro  
Senior Mechanical Engineer